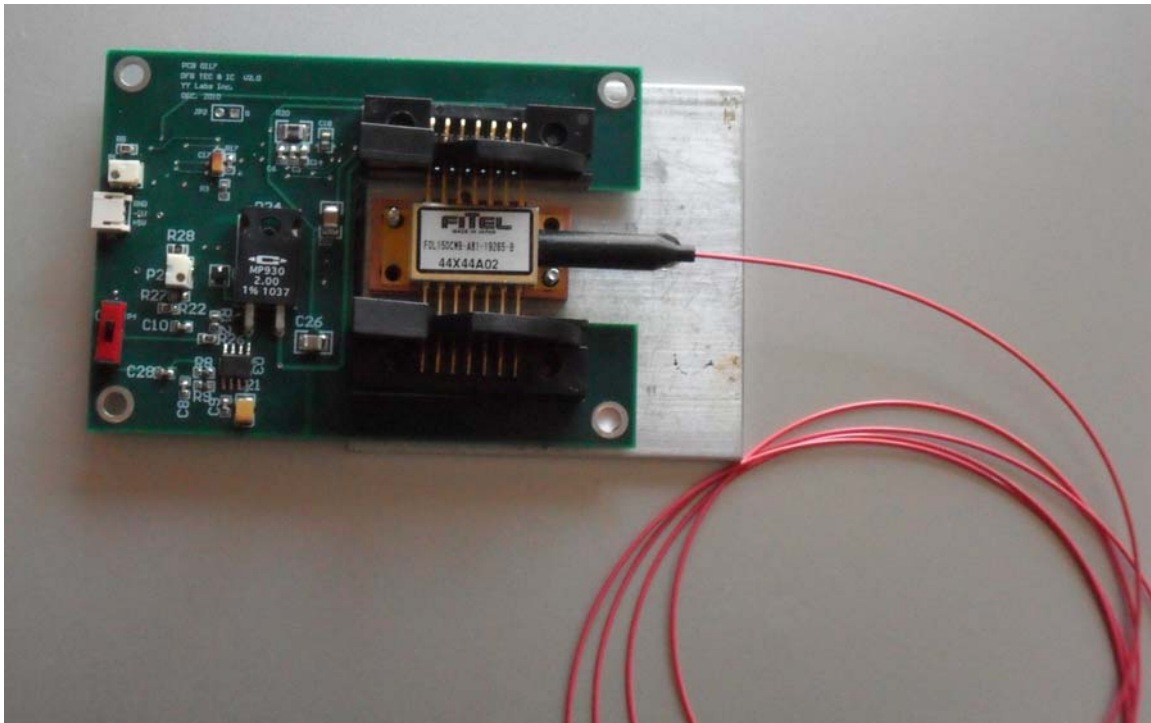


Operation Instructions for DFB/Pump Laser Driver and Temperature Controller

(Last updated on 8/10/12, Rev.2.3)



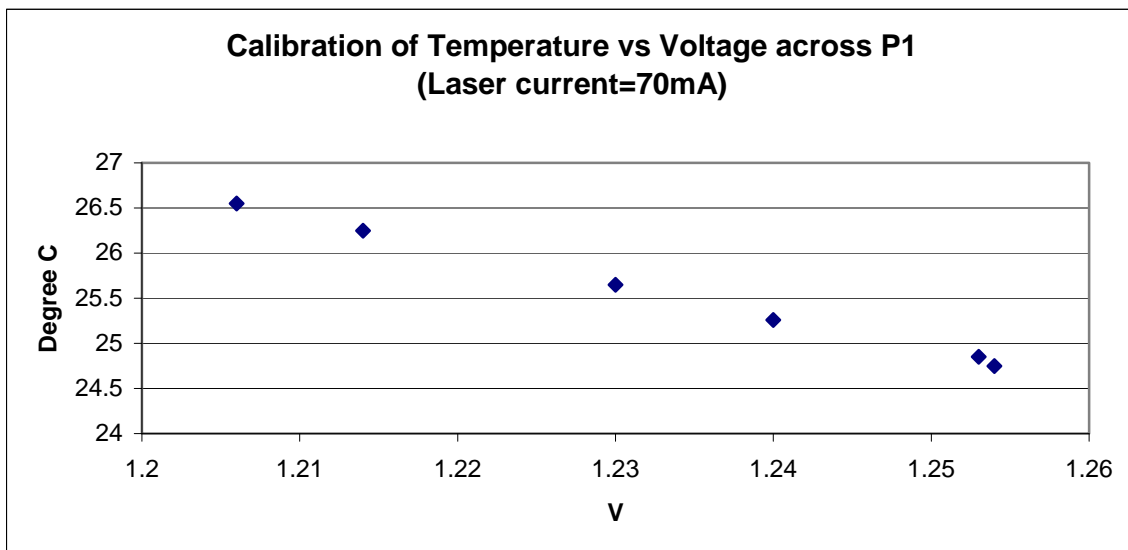
117/0126 DFB/pump Laser Driver and Temperature Controller

YY Labs' 0117/0126 DFB/pump laser current and temperature controller is designed for driving the DFB/pump lasers (for either grounding or floating pin-out). It consists of a tunable constant current source and a temperature controller. The working current of the board is related to the cooler's current, which is determined by the working temperature of the DFB/pump laser and the surrounding temperature of the Laser. Please make sure to put the laser on the heat sink or a large metal board for heat dissipation.

1. Specifications

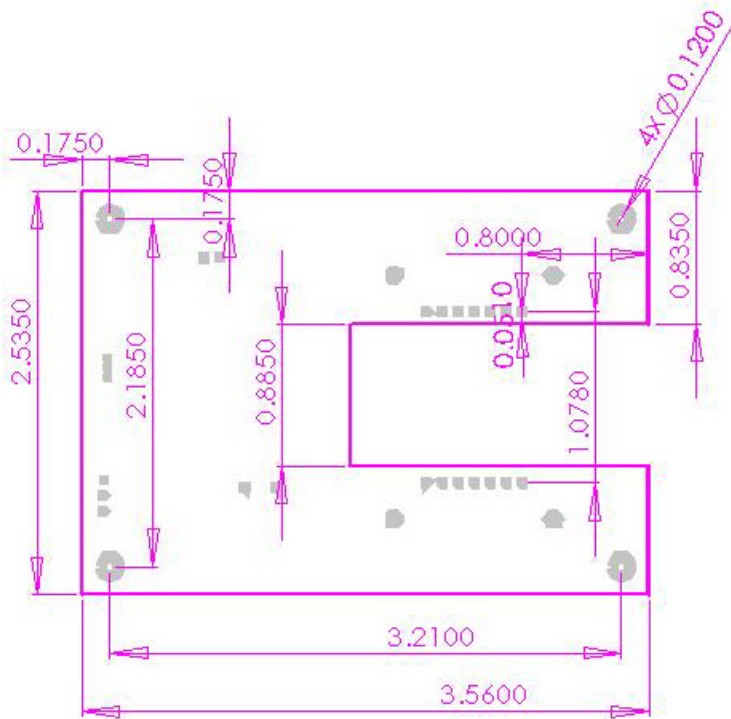
PARAMETERS	Min	Normal (25°c)	Max	Units
Laser				
Temperature				
Range	24.5		26	Degree C
Accuracy			0.1	Degree C
Stability	0.01			Degree C
Current				
Range	30		200	mA
Power Supplies				
Positive +5V		45	1500	mA
Negative -5V			500	mA
General				
Operating Temperature	0		+70	
Storage Temperature	-40		+80	
Dimension	3.56×2.535×1			Inch
Weight	1.5			Oz

The DFB laser working temperature is adjustable through potentiometer P1. The typical transfer function is shown as below. Each individual board may be slightly different.



3. Overview

Connectors:



Caution:

Please mount the DFB/Pump laser to the bottom plate with enough heat dissipation.
Please turn on the temperature controller first, then turn on the current driver.
Do not turn on current driver without TEC cooler on.

For any question or information, please contact:

YY Labs, Inc.
P.O.Box 597, Fremont, CA 94537
Tel: 510-739-6049 Fax: 510-405-9030
Email: yanyin@YYLabs.com
Web Site: www.yylabs.com